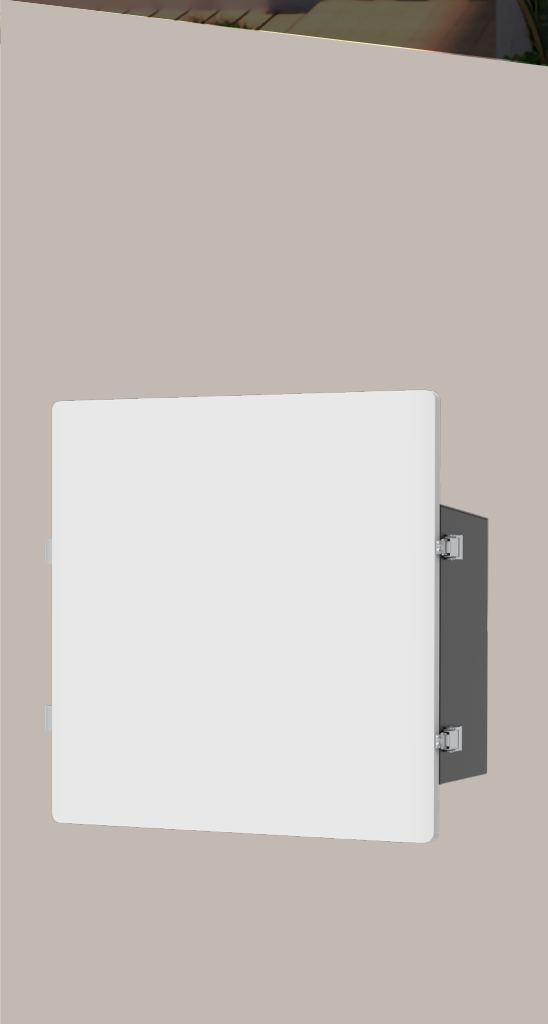


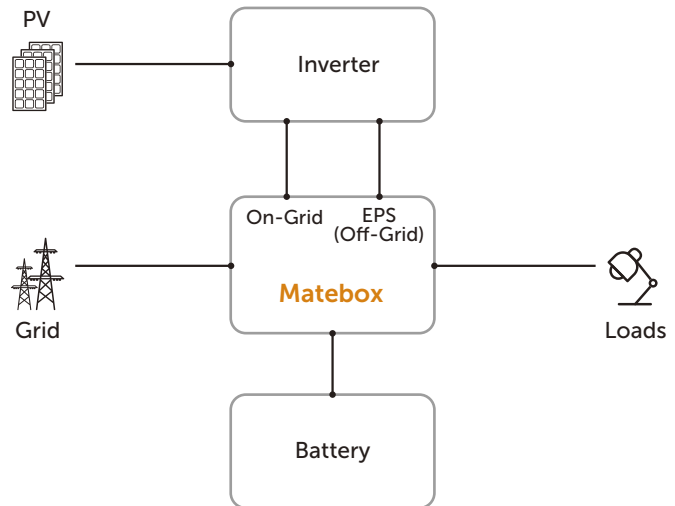
NEW FROM SOLAX
MATEBOX V1.4



MATEBOX V1.4



Compatible With -d Inverter



For the new X-ESS G4, we get rid of the complicated wiring work by laying all the wires in the Matebox. All you need to do is just to install one module on the top of another, and connect all the cables which are already well-sorted in the Matebox in different ports.

info@solaxpower.com
service@solaxpower.com



Contact Us More Information

www.solaxpower.com

AU: +61 1300 476529

DE: +49 6142 4091664

Global: +86 571-56260008

UK: +44 2476 586998

NL: +31 (0) 852 737932



X1-MATEBOX



X1-MATEBOX BASIC

BATTERY	
Battery voltage range [V]	80 ~ 480
Max. charge/discharge current [A]	30
ON-GRID(Inverter)	
Rated voltage [Vac], frequency [Hz]	220 / 230 / 240, 50 / 60
Max. on-grid current [A]	32.6
OFF-GRID(Inverter)	
Rated voltage [Vac], frequency [Hz]	230, 50 / 60
Rated current [A]	32.6
GRID(Utility)	
Rated grid voltage [Vac], frequency [Hz]	220 / 230 / 240, 50 / 60
Max. input current [A]	40
LOAD	
Rated voltage [Vac], frequency [Hz]	220 / 230 / 240, 50 / 60
Max. current [A]	32.6
ENVIRONMENT LIMIT	
Degree of protection	IP54
Protection class	Class I
Operating temperature range [°C]	-25 ~ +60°C (Derating above +45°C)
Storage temperature [°C]	-40 ~ +70°C
Relative humidity [%]	0 ~ 100 (condensing)
Altitude[m]	< 3000
Overvoltage category	III(AC), II(DC)
OTHER	
Cooling concept	Nature cooling
DIMENSION AND WEIGHT	
Dimensions [mm]	509 × 437 × 185
Net weight [kg]	9.5

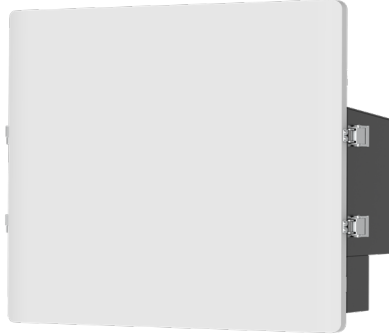
X1-MATEBOX ADVANCED

BATTERY	
Battery voltage range [V]	80 ~ 480
Max. charge/discharge current [A]	30
ON-GRID(Inverter)	
Rated voltage [Vac], frequency [Hz]	220 / 230 / 240, 50 / 60
Max. on-grid current [A]	32.6
OFF-GRID(Inverter)	
Rated voltage [Vac], frequency [Hz]	230, 50 / 60
Rated current [A]	32.6
GRID(Utility)	
Rated grid voltage [Vac], frequency [Hz]	220 / 230 / 240, 50 / 60
Max. input current [A]	60
LOAD	
Rated voltage [Vac], frequency [Hz]	220 / 230 / 240, 50 / 60
Max. current [A]	60
ENVIRONMENT LIMIT	
Degree of protection	IP54
Protection class	Class I
Operating temperature range [°C]	-25 ~ +60°C (Derating above +45°C)
Storage temperature [°C]	-40 ~ +70°C
Relative humidity [%]	0 ~ 100 (condensing)
Altitude[m]	< 3000
Overvoltage category	III(AC), II(DC)
OTHER	
Cooling concept	Nature cooling
DIMENSION AND WEIGHT	
Dimensions [mm]	509 × 437 × 185
Net weight [kg]	9.5





X3-MATEBOX



X3-MATEBOX BASIC

BATTERY	
Battery voltage range [V]	180 ~ 650
Max.charge / discharge current [A]	30
ON-GRID(Inverter)	
Rated voltage [Vac], frequency [Hz]	380 / 400 / 415, 50 / 60
Max. Grid (INV) input / output current [A]	24.1 / 32
OFF-GRID(Inverter)	
Rated voltage [Vac], frequency [Hz]	380 / 400 / 415, 50 / 60
Max. current [A]	24.1
GRID(Utility)	
Rated grid voltage [Vac], frequency [Hz]	380 / 400 / 415, 50 / 60
Max. input / output current [A]	32 / 32
LOAD	
Rated voltage [Vac], frequency [Hz]	380 / 400 / 415, 50 / 60
Max. current [A]	24.1
ENVIRONMENT LIMIT	
Degree of protection	IP54
Protection class	Class I
Operating temperature range [°C]	-25 ~ +60°C (Derating above +45°C)
Storage temperature [°C]	-40 ~ +70°C
Relative humidity [%]	0 ~ 100
Altitude [m]	< 3000
Overvoltage category	III(AC), II(DC)
OTHER	
Cooling concept	Nature cooling
DIMENSION AND WEIGHT	
Dimensions [mm]	533 x 397 x 204
Net weight [kg]	7

X3-MATEBOX ADVANCED

BATTERY	
Battery voltage range [V]	180~650
Max.charge / discharge current [A]	30
ON-GRID(Inverter)	
Rated voltage [Vac], frequency [Hz]	380 / 400 / 415, 50 / 60
Max. Grid (INV) input / output current [A]	24.1/24.1
OFF-GRID(Inverter)	
Rated voltage [Vac], frequency [Hz]	380 / 400 / 415, 50 / 60
Max. current [A]	24.1
GRID(Utility)	
Rated grid voltage [Vac], frequency [Hz]	380 / 400 / 415, 50 / 60
Max. input / output current [A]	63/63
LOAD	
Rated voltage [Vac], frequency [Hz]	380 / 400 / 415, 50 / 60
Max. current [A]	63
ENVIRONMENT LIMIT	
Degree of protection	IP54
Protection class	Class I
Operating temperature range [°C]	-25 ~ +60°C (Derating above +45°C)
Storage temperature [°C]	-40 ~ +70°C
Relative humidity [%]	0 ~ 100
Altitude [m]	< 3000
Overvoltage category	III(AC), II(DC)
OTHER	
Cooling concept	Nature cooling
DIMENSION AND WEIGHT	
Dimensions [mm]	551 x 512 x 204
Net weight [kg]	13.5

